

BORN TO BE WILD

Musikk & tekst: Mars Bonfire
Arr: Fredrick Schjelderup

Wild ♩ = ca. 144

The score is arranged for a large ensemble. It includes two Solo Parts in Bb (for beginners), Soprano, Solo, and Repiano Cornets, 2nd, 3rd, and Flugel horns, Solo, 1st, and 2nd Horns, 1st and 2nd Baritones, 1st, 2nd, and Bass Trombones, Euphonium, Eb Bass, Bb Bass, Drum Kit, Vibraphone, Marimba, and Percussion. The music is in 4/4 time with a key signature of one flat (Bb). A large red 'SAMPLE' watermark is overlaid diagonally across the score. Dynamics such as *f* (forte) and *fp* (fortissimo) are indicated throughout. The Percussion part includes an 'Ad lib.' section at the end.

A1

Sing:

Solo in Bb: *f* Get your mot - or run - nin', head out on the high - way!

Solo in Eb: *f* Get your mot - or run - nin', head out on the high - way!

Sop. Cor.: *f*

Solo Cor.: *f*

Rep. Cor.: *f*

2nd Cor.: *f*

3rd Cor.: *f*

Flug.: *mf*

Solo Hn.: *mf*

1st Hn.: *mf*

2nd Hn.: *mf*

1st Bar.: *mp*

2nd Bar.: *mp*

1st Tbn.: *f*

2nd Tbn.: *f*

B. Tbn.: *f*

Euph.: *f*

Eb Bass: *mf*

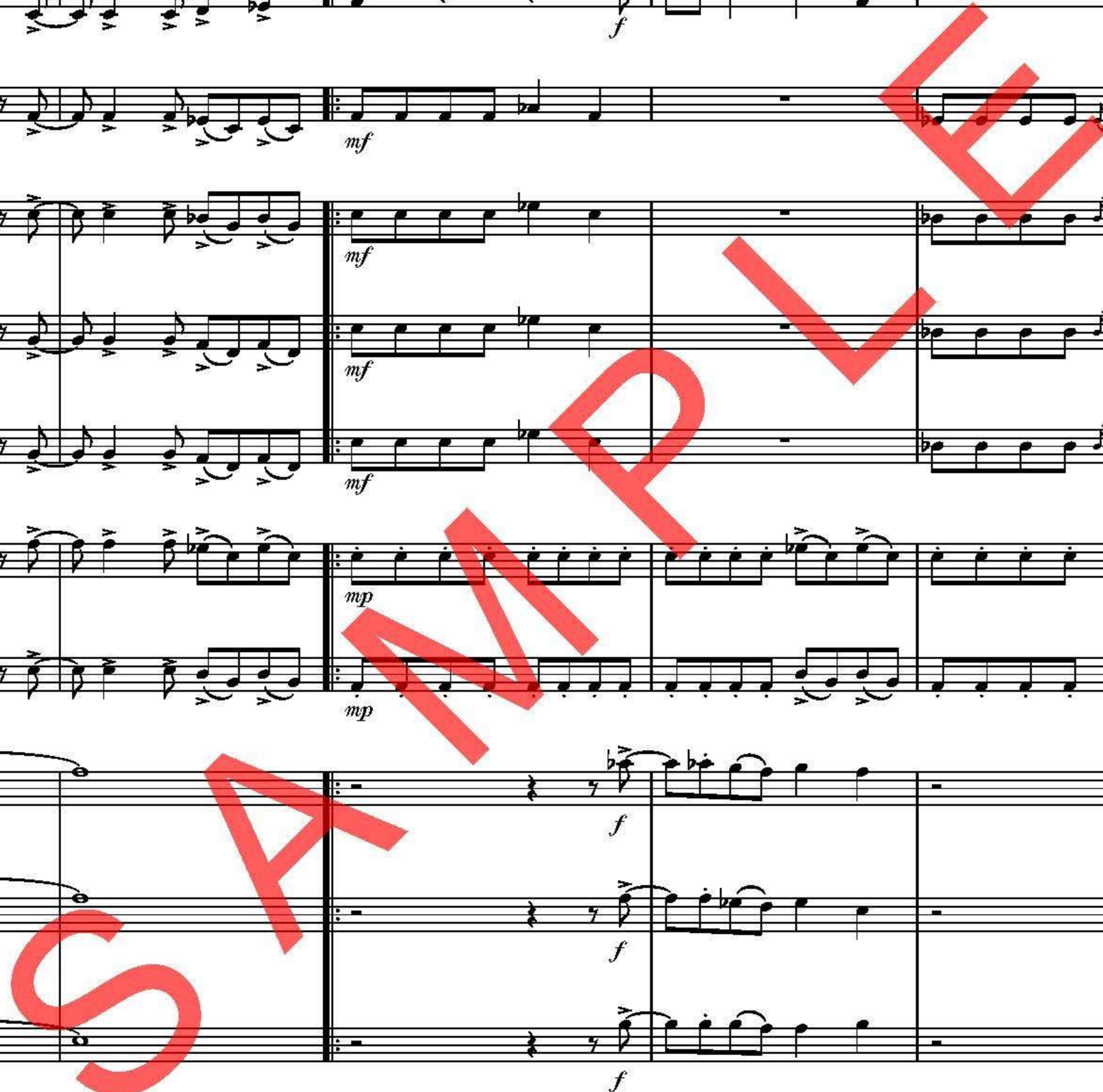
Bb Bass: *mf*

Dr.: *mf*

Vib.: *f*

Mar.: *mf*

Perc.: *mf*



13 B1 Play

Solo in Bb: Look - ing for ad - ven - ture, and what - e - ver comes - our way! *f*

Solo in Eb: Look - ing for ad - ven - ture, and what - e - ver comes - our way! *f*

Sop. Cor. *mf*

Solo Cor. *mf*

Rep. Cor. *mf*

2nd Cor. *mf*

3rd Cor. *mf*

Flug. *mf*

Solo Hn. *mf*

1st Hn. *mf*

2nd Hn. *mf*

1st Bar. *mf* *f* *mf*

2nd Bar. *mf* *f* *mf*

1st Tbn. *mf*

2nd Tbn. *mf*

B. Tbn. *mf*

Euph. *mf*

Eb Bass *mf* *f* *mf*

Bb Bass *mf* *f* *mf*

Dr. *mf*

Vib. *mf*

Mar. *mf* *f* *f*

Perc. *mf*

Ebm7 *Ebm7*

19

Solo in Bb

Solo in Eb

Sop. Cor.

Solo Cor.

Rep. Cor.

2nd Cor.

3rd Cor.

Flug.

Solo Hn.

1st Hn.

2nd Hn.

1st Bar.

2nd Bar.

1st Tbn.

2nd Tbn.

B. Tbn.

Euph.

Eb Bass

Bb Bass

Dr.

Vib.

Mar.

Perc.

1.

2

25 [2.] [C1]

Solo in Bb
Solo in Eb
Sop. Cor.
Solo Cor.
Rep. Cor.
2nd Cor.
3rd Cor.
Flug.
Solo Hn.
1st Hn.
2nd Hn.
1st Bar.
2nd Bar.
1st Tbn.
2nd Tbn.
B. Tbn.
Euph.
Eb Bass
B♭ Bass
Dr.
Vib.
Mar.
Perc.

f
mf
mf
mf
mf
mf
mf
mf
mf
mf
mf
f
mf
mf
mf
mf
mf
mf

This image shows a page of a musical score, page 5, for a symphony. It features 24 staves of music, including woodwinds (Solo in Bb and Eb, Soprano and Solo Cornets, Repetition Cornets, 2nd and 3rd Cornets, Flute, Solo and 1st and 2nd Horns), brasses (1st and 2nd Baritone, 1st, 2nd, and Bass Trombones, Euphonium), basses (Eb Bass, Bb Bass), and percussion (Drum, Vibraphone, Mallets, and Percussion). The score begins with a first ending bracket [2.] and a rehearsal mark [C1] at measure 25. Dynamics such as *f* and *mf* are indicated throughout the score. A large red 'SAMPLE' watermark is overlaid on the page.

D1 Sing (or play)

Play

Musical score for a concert band with vocal soloists. The score includes parts for Solo in Bb, Solo in Eb, Soprano and Solo Cornets, Repetition and 2nd/3rd Cornets, Flugelhorn, Solo and 1st/2nd Horns, 1st/2nd Baritone, 1st/2nd Trombone and Bass Trombone, Euphonium, Eb Bass and Bb Bass, Drums, Vibraphone, and Maracas. The lyrics are "Born to be wild!".

Lyrics:
Solo in Bb: Born to be wild!
Solo in Eb: Born to be wild!

Performance markings: *mp*, *f*, *Hi-hat*

37

Solo in Bb

Solo in Eb

Sop. Cor.

Solo Cor.

Rep. Cor.

2nd Cor.

3rd Cor.

Flug.

Solo Hn.

1st Hn.

2nd Hn.

1st Bar.

2nd Bar.

1st Tbn.

2nd Tbn.

B. Tbn.

Euph.

Eb Bass

Bb Bass

Dr.

Vib.

Mar.

Perc.

Sing (or play)

Born to be wi - - ld!

Play

Sing (or play)

Born to be wi - - ld!

Play