

# A FESTIVE SUITE FOR BRASS BAND

Don Bateman

## I. CELEBRATION MARCH

Musica modesto  $\text{♩} = 112$

**A** Marcato

Soprano Cornet Eb

Solo Cornet Bb

Repiano Cornet Bb

2nd Cornet Bb

3rd Cornet Bb

Flugelhorn

Solo Horn Eb

1st Horn Eb

2nd Horn Eb

1st Baritone Bb

2nd Baritone Bb

1st Trombone Bb

2nd Trombone Bb

Bass Trombone

Euphonium Bb

Bass Eb

Bass Bb

Timpani

Drum Set

Percussion

*Tacet throughout*

2

Sop. Cnt.

S. Cnt.

Rep. Cnt.

2nd Cnt.

3rd Cnt.

Flug.

Solo Hn.

1st Hn.

2nd Hn.

1st Bar.

2nd Bar.

1st Tbn.

2nd Tbn.

B. Tbn.

Euph.

Bass Eb

Bass Bb

Temp.

D. Set

Perc.

**B**

Sop. Cnt.

S. Cnt.

Rep. Cnt.

2nd Cnt.

3rd Cnt.

Flug.

Solo Hn.

1st Hn.

2nd Hn.

1st Bar.

2nd Bar.

1st Tbn.

2nd Tbn.

B. Tbn.

Euph.

Bass Eb

Bass Bb

Timp.

D. Set

Perc.

4

**C**

Sop. Cnt.

S. Cnt.

Rep. Cnt.

2nd Cnt.

3rd Cnt.

Flug.

Solo Hn.

1st Hn.

2nd Hn.

1st Bar.

2nd Bar.

1st Tbn.

2nd Tbn.

B. Tbn.

Euph.

Bass Eb

Bass Bb

Timp.

D. Set

Perc.

*1 player (trio with Cnts.)*

Sop. Cnt.

S. Cnt.

Rep. Cnt.

2nd Cnt.

3rd Cnt.

Flug.

Solo Hn.

1st Hn.

2nd Hn.

1st Bar.

2nd Bar.

1st Tbn.

2nd Tbn.

B. Tbn.

Euph.

Bass Eb

Bass Bb

Timp.

D. Set

Perc.

Sop. Cnt.

S. Cnt.

Rep. Cnt.

2nd Cnt.

3rd Cnt.

Flug.

Solo Hn.

1st Hn.

2nd Hn.

1st Bar.

2nd Bar.

1st Tbn.

2nd Tbn.

B. Tbn.

Euph.

Bass Eb

Bass Bb

Timp.

D. Set

Perc.

**D**

LAKE MUSIC

DEMO SCORE

33 **E** 7

Sop. Cnt. *mp*

S. Cnt. *mp*

Rep. Cnt. *mp*

2nd Cnt. *mp*

3rd Cnt. *mp*

Flug. *mp*

Solo Hn. *mp*

1st Hn. *mp*

2nd Hn. *mp*

1st Bar. *mp*

2nd Bar. *mp*

1st Tbn. *mp*

2nd Tbn. *mp*

B. Tbn. *mp*

Euph. *mp* *div.* *2nd Euph.*

Bass Eb *mp*

Bass Bb *mp*

Timp. *mp*

D. Set *hp*

Perc.

8 39

Sop. Cnt. *mf*

S. Cnt. *mf* *à l*

Rep. Cnt. *mf*

2nd Cnt. *mf* *à l*

3rd Cnt. *mf* *à l*

Flug. *mf*

Solo Hn. *mf* *mp*

1st Hn. *mf* *mp*

2nd Hn. *mf*

1st Bar. *mf*

2nd Bar. *mf*

1st Tbn. *mp*

2nd Tbn. *mp*

B. Tbn. *mf* *mp*

Euph. *mf* *mp*

Bass Eb *mf*

Bass Bb *mf*

Timp.

D. Set

Perc.

Score for measures 37-41. The score includes parts for Soprano, Soprano Contralto, Repetition Contralto, 2nd Contralto, 3rd Contralto, Flute, Solo Horn, 1st Horn, 2nd Horn, 1st Baritone, 2nd Baritone, 1st Trombone, 2nd Trombone, Bass Trombone, Euphonium, Bass Eb, Bass Bb, Timpani, and Percussion. The music features various dynamics such as *mf* and *mp*.

Score for measures 52-56. The score includes parts for Soprano, Soprano Contralto, Repetition Contralto, 2nd Contralto, 3rd Contralto, Flute, Solo Horn, 1st Horn, 2nd Horn, 1st Baritone, 2nd Baritone, 1st Trombone, 2nd Trombone, Bass Trombone, Euphonium, Bass Eb, Bass Bb, Timpani, and Percussion. The music features various dynamics such as *mf* and *mp*.



Score page 11, starting with a **G** chord. The page includes staves for Soprano, Alto, Tenor, and Bass vocalists, as well as various instruments including Flute, Horns, Trumpets, Trombones, Euphonium, Basses, Timpani, and Percussion. A large red watermark "LAKE MUSIC" is overlaid diagonally across the page.

Score page 12, starting with measure 61. The page includes staves for Soprano, Alto, Tenor, and Bass vocalists, as well as various instruments including Flute, Horns, Trumpets, Trombones, Euphonium, Basses, Timpani, and Percussion. A large red watermark "DEMO SCORE" is overlaid diagonally across the page.

II. HIPPO'S PARADE

Capriccioso  $\text{♩} = 176$  (in Swing)

A

Soprano Cornet Eb

Solo Cornet Bb

Repiano Cornet Bb

2nd Cornet Bb

3rd Cornet Bb

Flugelhorn

Solo Horn Eb

1st Horn Eb

2nd Horn Eb

1st Baritone Bb

2nd Baritone Bb

1st Trombone Bb

2nd Trombone Bb

Bass Trombone

Euphonium Bb

Bass Eb

Bass Bb

Timpani

Drum Set

Percussion

*mf*, *mp*, *Solo*, *Bb & Eb*, *Ride Cymbal*

8

Sop. Cnt.

S. Cnt.

Rep. Cnt.

2nd Cnt.

3rd Cnt.

Flug.

Solo Hn.

1st Hn.

2nd Hn.

1st Bar.

2nd Bar.

1st Tbn.

2nd Tbn.

B. Tbn.

Euph.

Bass Eb

Bass Bb

Timp.

D. Set

Perc.

*mf*, *opt.*, *f*, *Soli*, *1 player*, *Vibraphone*

**B**

15

Sop. Cnt. *mf* *opt.*

S. Cnt. *mf*

Rep. Cnt. *mf*

2nd Cnt. *mf*

3rd Cnt. *mf*

Flug. *mp*

Solo Hn. *mp*

1st Hn. *mp*

2nd Hn. *mp*

1st Bar. *mp* *mf*

2nd Bar. *mp* *mf*

1st Tbn. *mp* *mf*

2nd Tbn. *mp* *mf*

B. Tbn. *mp* *mf*

Euph. *mp* *mf* *div.*

Bass Eb *f* *Solo*

Bass Bb *mf* *Solo*

Timp.

D. Set *mf*

Perc. *mf*

**C**

16 23

Sop. Cnt. *mf* *opt.*

S. Cnt. *mf*

Rep. Cnt. *mf*

2nd Cnt. *mp* *mf*

3rd Cnt. *mp* *mf*

Flug. *mf*

Solo Hn. *mp*

1st Hn. *mp*

2nd Hn. *mp*

1st Bar. *mp* *mf*

2nd Bar. *mp* *mf*

1st Tbn. *mp* *mf*

2nd Tbn. *mp* *mf*

B. Tbn. *mp* *mf*

Euph. *mf* *Soli* *à 2*

Bass Eb *mf* *Soli*

Bass Bb *mf*

Timp.

D. Set *f*

Perc. *f*



30

**D**

17

Sop. Cnt. *p* *mf* *opt.*

S. Cnt. *p* *mf*

Rep. Cnt. *p* *mf*

2nd Cnt. *p* *mf*

3rd Cnt. *p* *mf*

Flug. *mp*

Solo Hn. *mp*

1st Hn. *mp*

2nd Hn. *mp*

1st Bar. *p* *mf*

2nd Bar. *p* *mf*

1st Tbn. *p* *mf*

2nd Tbn. *p* *mf*

B. Tbn. *p* *mf*

Euph. *p* *mf* *div.*

Bass Eb *Solo* *f*

Bass Bb *mf*

Timp.

D. Set *mf*

Perc. *mf*

18

**E**

37

Sop. Cnt. *mf* *Solo* *G* *Asp* *Bm* *3*

S. Cnt.

Rep. Cnt. *p*

2nd Cnt. *p*

3rd Cnt. *p*

Flug.

Solo Hn.

1st Hn.

2nd Hn.

1st Bar. *mp* *p*

2nd Bar. *mp* *p*

1st Tbn. *mp*

2nd Tbn. *mp*

B. Tbn. *mp*

Euph. *mp*

Bass Eb *Solo* *mf*

Bass Bb *mf*

Timp. *mp*

D. Set *mf*

Perc.

45 E7 Am7 D7 Gmaj7 G7 Cmaj7 Cm6 Bm7 E7 A7 19

Sop. Cnt.  
S. Cnt.  
Rep. Cnt.  
2nd Cnt.  
3rd Cnt.  
Flug.  
Solo Hn.  
1st Hn.  
2nd Hn.  
1st Bar.  
2nd Bar.  
1st Tbn.  
2nd Tbn.  
B. Tbn.  
Euph.  
Bass Eb  
Bass Bb  
Timp.  
D. Set  
Perc.

20 55 D7 F G

Sop. Cnt.  
S. Cnt.  
Rep. Cnt.  
2nd Cnt.  
3rd Cnt.  
Flug.  
Solo Hn.  
1st Hn.  
2nd Hn.  
1st Bar.  
2nd Bar.  
1st Tbn.  
2nd Tbn.  
B. Tbn.  
Euph.  
Bass Eb  
Bass Bb  
Timp.  
D. Set  
Perc.

21

54

accept. to E♭Bs.

*mf*

Sop. Cnt.

S. Cnt.

Rep. Cnt.

2nd Cnt.

3rd Cnt.

Flug.

Solo Hn.

1st Hn.

2nd Hn.

1st Bar.

2nd Bar.

1st Tbn.

2nd Tbn.

B. Tbn.

Euph.

Bass Eb

Bass Bb

Timp.

D. Set

Perc.

*f*

*mp*

*B♭ & E♭*

*mf*

22

**G**

*f*

Sop. Cnt.

S. Cnt.

Rep. Cnt.

2nd Cnt.

3rd Cnt.

Flug.

*mp*

Solo Hn.

*mp*

1st Hn.

*mp*

2nd Hn.

*mp*

1st Bar.

*mp*

2nd Bar.

*mp*

1st Tbn.

*mp*

2nd Tbn.

*f*

B. Tbn.

*f*

Euph.

*unis.*

*f*

Bass Eb

Bass Bb

*mp*

Timp.

D. Set

Perc.

*mf*

23

Sop. Cnt. *mf*

S. Cnt. *p* *mf*

Rep. Cnt. *mf*

2nd Cnt. *p* *mf*

3rd Cnt. *p* *mf*

Flug. *mp*

Solo Hn. *mp*

1st Hn. *mp*

2nd Hn. *mp*

1st Bar. *mf*

2nd Bar. *p* *mf*

1st Tbn. *p* *mf*

2nd Tbn. *p* *mf*

B. Tbn. *p* *mf*

Euph. *p* *mf*

Bass Eb *Solo* *f*

Bass Bb *mp* *mf*

Timp. *mp*

D. Set *mp*

Perc. *mf*

**H**

24

Sop. Cnt. *f* *ff* *opt.*

S. Cnt. *f* *ff*

Rep. Cnt. *f* *ff*

2nd Cnt. *f* *ff*

3rd Cnt. *f* *ff*

Flug. *f* *ff*

Solo Hn. *f* *ff*

1st Hn. *f* *ff*

2nd Hn. *f* *ff*

1st Bar. *f* *ff*

2nd Bar. *f* *ff*

1st Tbn. *f* *ff*

2nd Tbn. *f* *ff*

B. Tbn. *f* *ff*

Euph. *div.* *ff* *unis.* *div.*

Bass Eb *f* *ff*

Bass Bb *Soli* *mf* *f* *ff*

Timp. *f* *ff*

D. Set *f* *ff*

Perc. *f* *ff*

### III. SPIRITUAL & GOSPEL SHOUT

Consistimento ♩ = 66

**A**

Soprano Cornet Eb

Solo Cornet Bb

Repiano Cornet Bb

2nd Cornet Bb

3rd Cornet Bb

Flugelhorn

Solo Horn Eb

1st Horn Eb

2nd Horn Eb

1st Baritone Bb

2nd Baritone Bb

1st Trombone Bb

2nd Trombone Bb

Bass Trombone

Euphonium Bb

Bass Eb

Bass Bb

Timpani

Drum Set

Percussion

*mf*, *pp*, *mp*, *F & Bb*, *p*, *pp*

*Solo* *espressivo*

*Play*

11

Sop. Cnt.

S. Cnt.

Rep. Cnt.

2nd Cnt.

3rd Cnt.

Flug.

Solo Hn.

1st Hn.

2nd Hn.

1st Bar.

2nd Bar.

1st Tbn.

2nd Tbn.

B. Tbn.

Euph.

Bass Eb

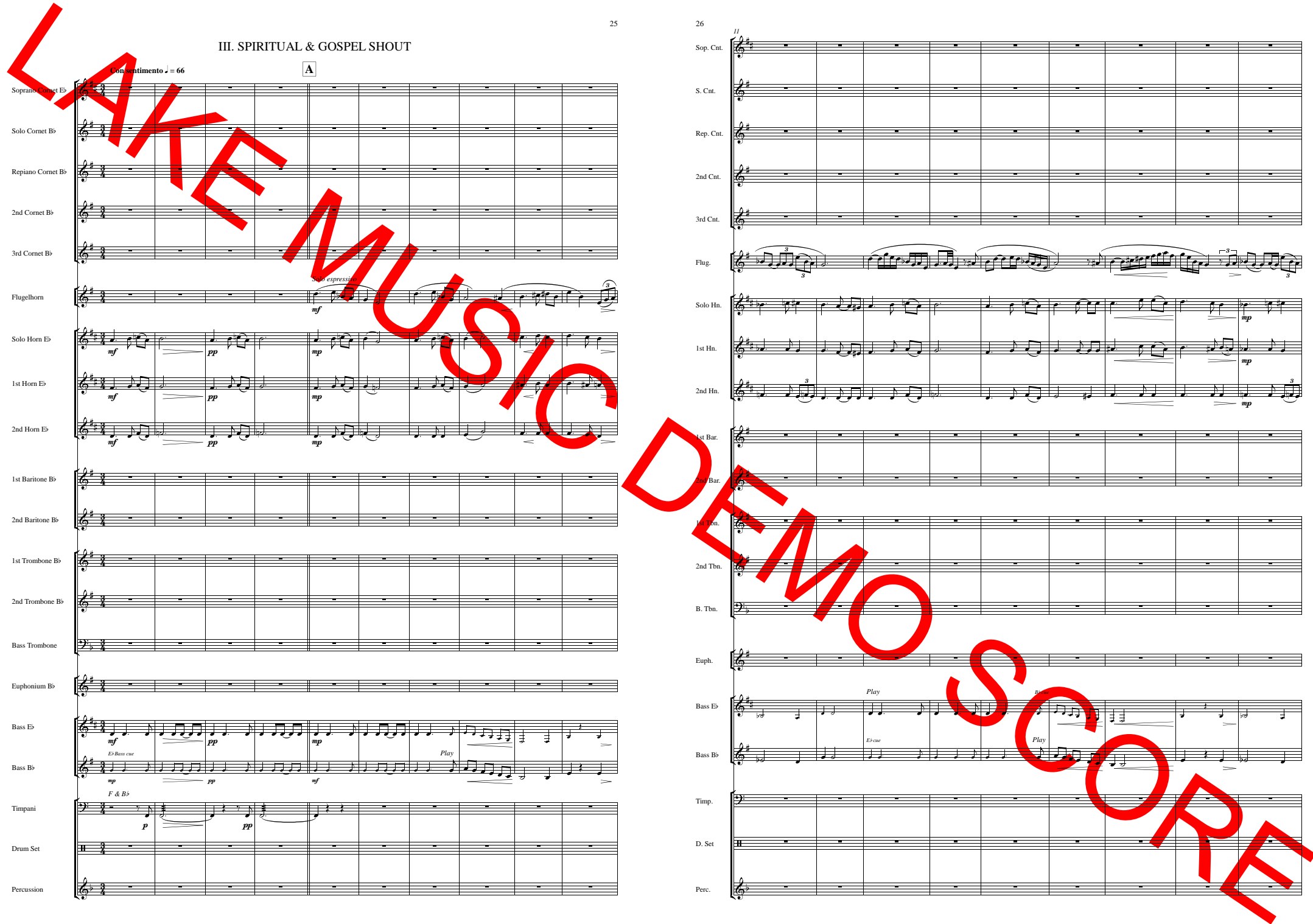
Bass Bb

Timp.

D. Set

Perc.

*mp*, *Play*



**B** Con tranquilla

**C**

Sop. Cnt. *mp* *pp*

S. Cnt. *p* *pp*

Rep. Cnt. *p* *mp* *pp*

2nd Cnt. *pp* *p* *pp*

3rd Cnt. *pp* *p* *pp*

Flug. *mf*

Solo Hn. *mp*

1st Hn. *mp*

2nd Hn. *mp*

1st Bar. *pp* *p* *pp*

2nd Bar. *pp* *p* *pp*

1st Tbn. *pp* *p* *pp*

2nd Tbn. *pp* *p* *pp*

B. Tbn. *pp* *p* *pp*

Euph. *Soli* *p* *mp* *pp*

Bass Eb *pp* *p* *mp*

Bass Bb *pp* *p* *mp*

Timp. *mf*

D. Set *mf* *mp*

Perc. *vib., with E♭ Cnt.* *p* *mp*

Accel.

Sop. Cnt. *mf*

S. Cnt. *mf*

Rep. Cnt. *mf*

2nd Cnt. *mf*

3rd Cnt. *mf*

Flug. *mf*

Solo Hn. *mf*

1st Hn. *mf*

2nd Hn. *mf*

1st Bar. *mf*

2nd Bar. *mf*

1st Tbn. *mf*

2nd Tbn. *mf*

B. Tbn. *mf*

Euph. *mf*

Bass Eb *B♭ cue* *mf* *pp* *mf*

Bass Bb *Play* *mf* *mf*

Timp. *mf*

D. Set *Sticks* *mp* *mf*

Perc. *mf*

**D** Con energia  $\text{♩} = 90$

Sop. Cnt. *mf*

S. Cnt. *f*

Rep. Cnt. *mf* *Play*

2nd Cnt. *f*

3rd Cnt. *f*

Flug. *1st time only*

Solo Hn. *1st time only*

1st Hn. *1st time only*

2nd Hn. *1st time only*

1st Bar. *mf*

2nd Bar. *mf*

1st Tbn. *mf*

2nd Tbn. *mf*

B. Tbn. *mf*

Euph. *mf* *unis.*

Bass Eb *mf*

Bass Bb *mf*

Timp. *mp*

D. Set *mf*

Perc. *mf*

Sop. Cnt. *1.*

S. Cnt.

Rep. Cnt.

2nd Cnt.

3rd Cnt.

Flug.

Solo Hn.

1st Hn.

2nd Hn.

1st Bar. *mf*

2nd Bar. *mf*

1st Tbn. *mf*

2nd Tbn. *mf*

B. Tbn. *mf*

Euph. *mf*

Bass Eb *mf*

Bass Bb *mf*

Timp. *mf*

D. Set *mf*

Perc. *mf*

55 **E** 31

Sop. Cnt. *mf*

S. Cnt. *mp*

Rep. Cnt. *mf*

2nd Cnt. *mp*

3rd Cnt. *mp*

Flug.

Solo Hn.

1st Hn.

2nd Hn.

1st Bar. *mp*

2nd Bar.

1st Tbn. *mp*

2nd Tbn. *mp*

B. Tbn. *mp*

Euph. *Soli*

Bass Eb *mp*

Bass Bb *mp*

Timp. *F & C*

D. Set

Perc.

32 62

Sop. Cnt.

S. Cnt.

Rep. Cnt.

2nd Cnt.

3rd Cnt.

Flug.

Solo Hn.

1st Hn.

2nd Hn.

1st Bar.

2nd Bar.

1st Tbn.

2nd Tbn.

B. Tbn.

Euph.

Bass Eb

Bass Bb

Timp.

D. Set

Perc.



Score page 33. Includes parts for Sop. Cnt., S. Cnt., Rep. Cnt., 2nd Cnt., 3rd Cnt., Flug., Solo Hn., 1st Hn., 2nd Hn., 1st Bar., 2nd Bar., 1st Tbn., 2nd Tbn., B. Tbn., Euph., Bass Eb, Bass Bb, Timp., D. Set, and Perc. Tempo markings include  $\text{♩} = 60$  and  $\text{♩} = 66$ . Dynamic markings include *f*, *mf*, *p*, *pp*, *mp*, and *ff*. Performance instructions include *opt.*, *Solo*, *B♭ cue*, *E♭ cue*, *Play*, and *F & B♭*. A red watermark 'WAKE MUSIC' is overlaid diagonally across the page.

Score page 34. Includes parts for Sop. Cnt., S. Cnt., Rep. Cnt., 2nd Cnt., 3rd Cnt., Flug., Solo Hn., 1st Hn., 2nd Hn., 1st Bar., 2nd Bar., 1st Tbn., 2nd Tbn., B. Tbn., Euph., Bass Eb, Bass Bb, Timp., D. Set, and Perc. Dynamic markings include *f*, *mf*, *ff*, *pp*, *mp*, and *ff*. Performance instructions include *opt.* and *with E♭ Cnt.*. A red watermark 'DEMO SCORE' is overlaid diagonally across the page.

IV. PARTY TALK

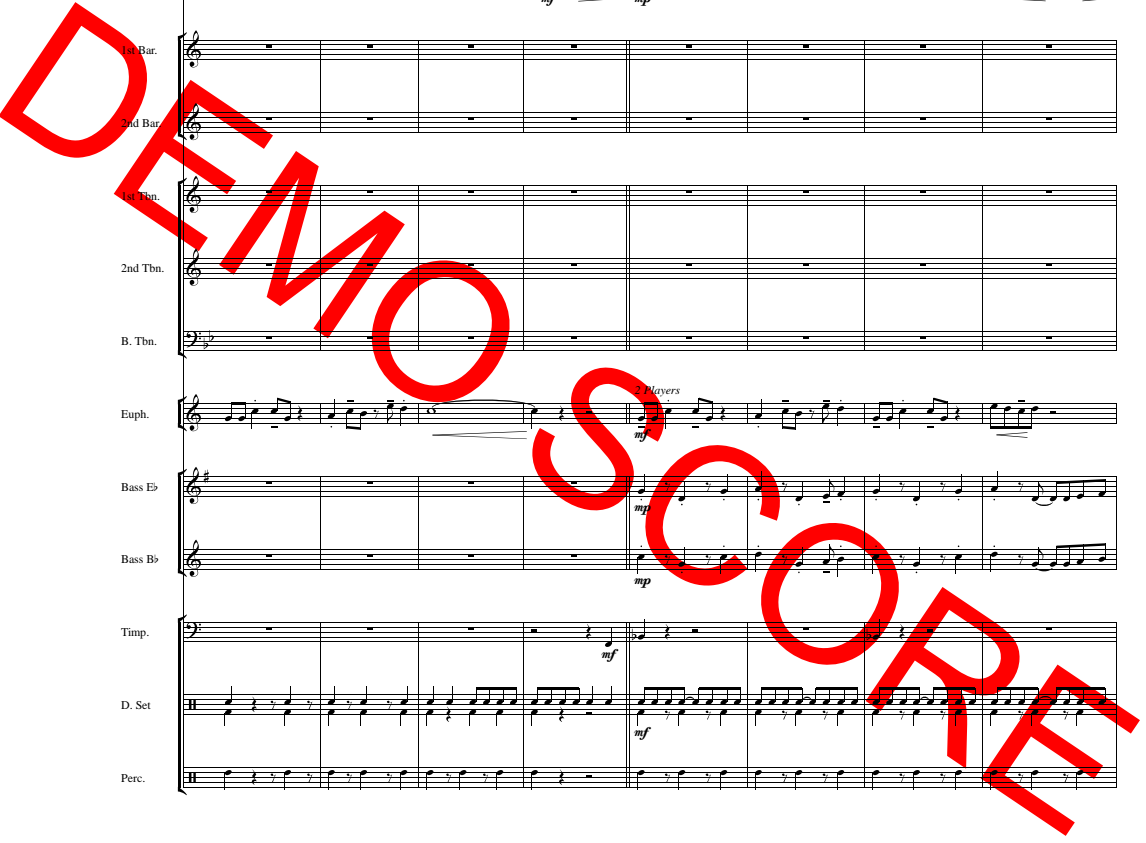
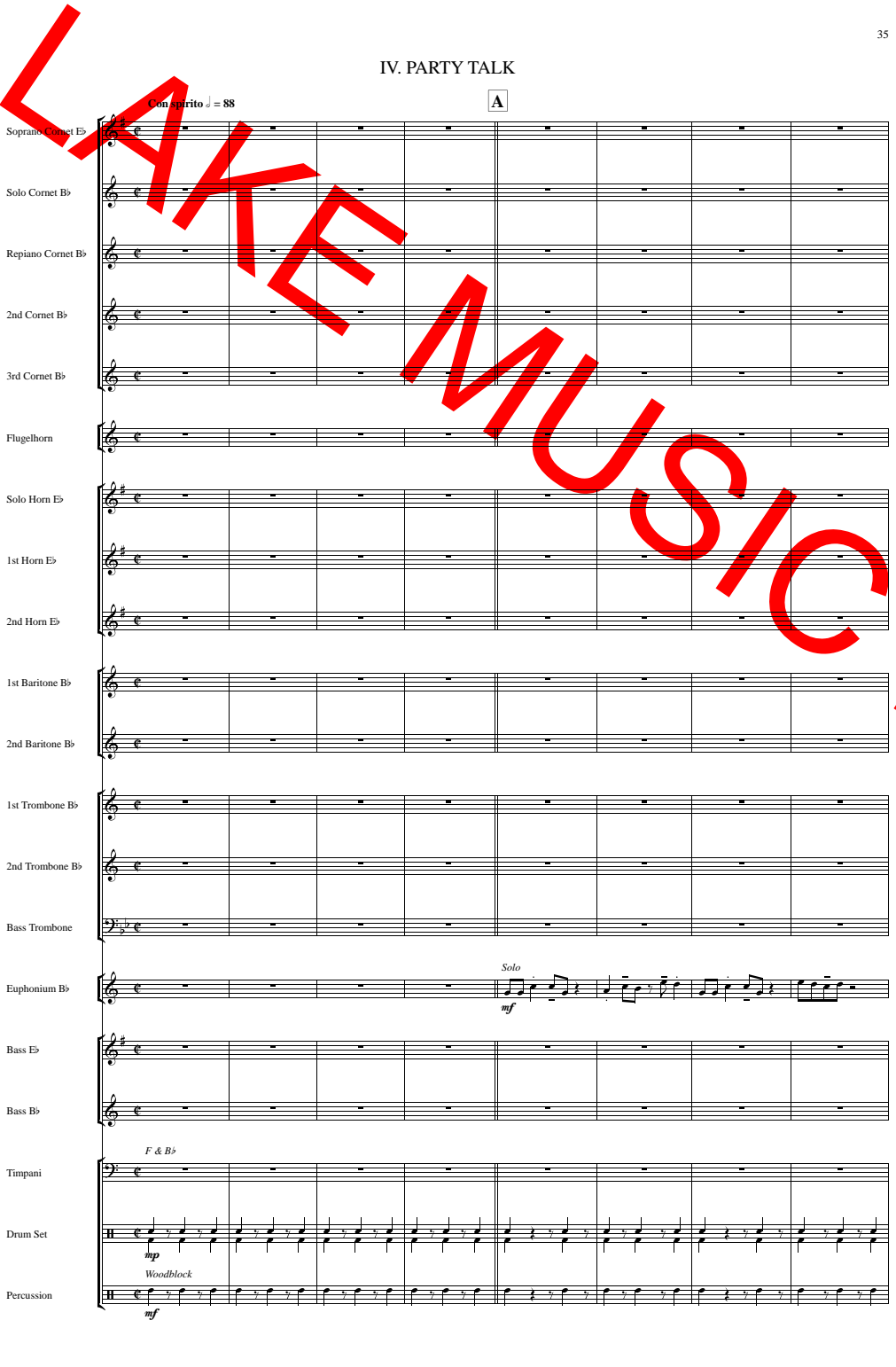
Con spirito ♩ = 88

A

Musical score for page 35, section A. Instruments listed on the left: Soprano Cornet Eb, Solo Cornet Bb, Repiano Cornet Bb, 2nd Cornet Bb, 3rd Cornet Bb, Flugelhorn, Solo Horn Eb, 1st Horn Eb, 2nd Horn Eb, 1st Baritone Bb, 2nd Baritone Bb, 1st Trombone Bb, 2nd Trombone Bb, Bass Trombone, Euphonium Bb, Bass Eb, Bass Bb, Timpani, Drum Set, Percussion. The score includes various dynamics such as *mf* and *mp*, and performance instructions like *Solo* and *Woodblock*.

B

Musical score for page 36, section B. Instruments listed on the left: Sop. Cnt., S. Cnt., Rep. Cnt., 2nd Cnt., 3rd Cnt., Flug., Solo Hn., 1st Hn., 2nd Hn., 1st Bar., 2nd Bar., 1st Tbn., 2nd Tbn., B. Tbn., Euph., Bass Eb, Bass Bb, Timp., D. Set, Perc. The score includes dynamics like *mf* and *mp*, and performance instructions like *3 Players*.

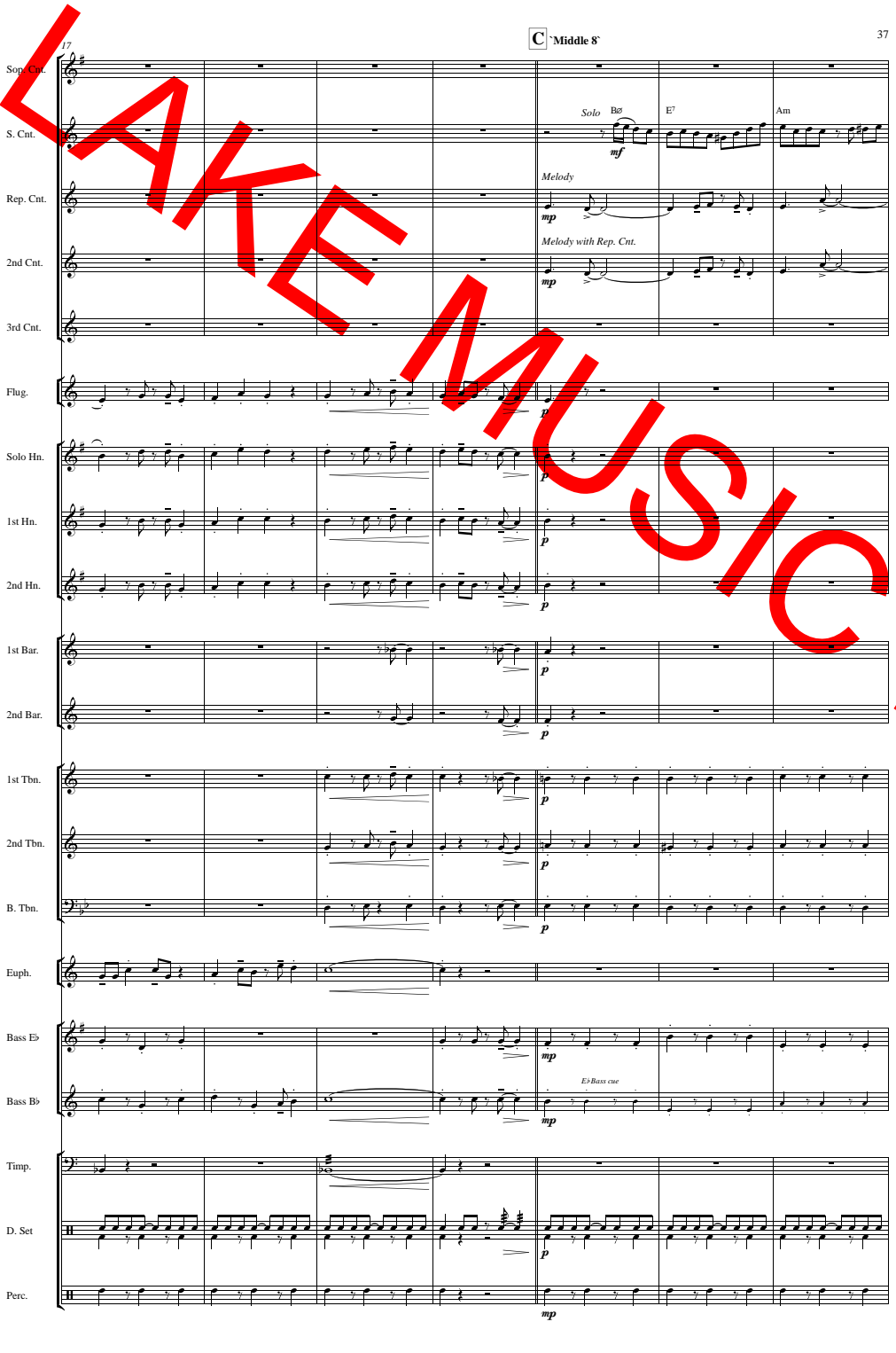


C Middle 8

Score for measures 17-36. The score includes parts for Soprano, Soprano Contralto, Repetitive Contralto, Second Contralto, Third Contralto, Flute, Solo Horn, First Horn, Second Horn, First Baritone, Second Baritone, First Trombone, Second Trombone, Bass Trombone, Euphonium, Bass Eb, Bass Bb, Tympani, and Drums. Musical notation includes notes, rests, and dynamics such as *mf*, *mp*, and *p*. Chord symbols like *Solo Bb*, *E7*, and *Am* are present. Performance instructions include *Melody*, *Melody with Rep. Cnt.*, and *Es Bass cue*.

D

Score for measures 37-46. The score includes parts for Soprano, Soprano Contralto, Repetitive Contralto, Second Contralto, Third Contralto, Flute, Solo Horn, First Horn, Second Horn, First Baritone, Second Baritone, First Trombone, Second Trombone, Bass Trombone, Euphonium, Bass Eb, Bass Bb, Tympani, and Drums. Musical notation includes notes, rests, and dynamics such as *mf*, *mp*, and *p*. Chord symbols like *Am7*, *D11*, *D7*, *G*, *as written*, *G7*, and *C* are present. Performance instructions include *Esph. cue*, *2 Players*, and *Play*.



31 **E** 39

Sop. Cnt. *mf*

S. Cnt. *mf*

Rep. Cnt. *mf*

2nd Cnt. *mf*

3rd Cnt. *mf*

Flug. *mf*

Solo Hn. *f*

1st Hn. *f*

2nd Hn. *f*

1st Bar. *f*

2nd Bar. *mf*

1st Tbn. *mf*

2nd Tbn. *mf*

B. Tbn. *mf*

Euph. *mf*

Bass Eb *mf*

Bass Bb *mf*

Timp. *mf*

D. Set *mf*

Perc.

39 **F**

Sop. Cnt. *f*

S. Cnt. *f*

Rep. Cnt. *f*

2nd Cnt. *f*

3rd Cnt. *f*

Flug. *f*

Solo Hn. *f*

1st Hn. *f*

2nd Hn. *f*

1st Bar. *f*

2nd Bar. *f*

1st Tbn. *f*

2nd Tbn. *f*

B. Tbn. *f*

Euph. *f* *div.*

Bass Eb *f*

Bass Bb *f*

Timp. *f*

D. Set *f*

Perc. *f*

41

Sop. Cnt.

S. Cnt.

Rep. Cnt.

2nd Cnt.

3rd Cnt.

Flug.

Solo Hn.

1st Hn.

2nd Hn.

1st Bar.

2nd Bar.

1st Tbn.

2nd Tbn.

B. Tbn.

Euph.

Bass Eb

Bass Bb

Timp.

D. Set

Perc.

42

53

G

Sop. Cnt.

S. Cnt.

Rep. Cnt.

2nd Cnt.

3rd Cnt.

Flug.

Solo Hn.

1st Hn.

2nd Hn.

1st Bar.

2nd Bar.

1st Tbn.

2nd Tbn.

B. Tbn.

Euph.

Bass Eb

Bass Bb

Timp.

D. Set

Perc.

*à 2*

*mp*

*mf*

*1 Player*

*mp*

*mf*

*mp*

*mf*

*mp*

*mf*

*F & B♭*

*mp*

*mf*

61 **H** 43

Sop. Cnt. *All 4 div.*

S. Cnt. *mf*

Rep. Cnt. *mf*

2nd Cnt. *Both*

3rd Cnt. *1 Player* *Both*

Flug. *mf*

Solo Hn. *mf*

1st Hn. *mf*

2nd Hn. *mf*

1st Bar. *Euph. cue* *mf*

2nd Bar. *mf*

1st Tbn. *mf*

2nd Tbn. *mf*

B. Tbn. *mf*

Euph. *Both* *mf*

Bass Eb *Bb Bass cue* *mf*

Bass Bb *mf*

Timp. *mf*

D. Set *mp* *mf*

Perc.

44 **I** 69

Sop. Cnt. *mp*

S. Cnt. *3 players* *mf*

Rep. Cnt.

2nd Cnt.

3rd Cnt.

Flug. *mf* *mp*

Solo Hn. *mf* *mp*

1st Hn. *mf* *mp*

2nd Hn. *mf* *mp*

1st Bar. *Play* *mf*

2nd Bar.

1st Tbn.

2nd Tbn.

B. Tbn.

Euph. *mf*

Bass Eb *Play* *mp*

Bass Bb *mp*

Timp. *mp*

D. Set

Perc.

77 **J** 45

Sop. Cnt. *mf*

S. Cnt. *mf* Solo *E<sup>7</sup>9*

Rep. Cnt. *mp* Melody

2nd Cnt. *mp* Melody

3rd Cnt.

Flug. *mp*

Solo Hn. *mf*

1st Hn. *mf*

2nd Hn. *mf*

1st Bar. *mp*

2nd Bar.

1st Tbn. *p*

2nd Tbn. *p*

B. Tbn. *p*

Euph.

Bass Eb *mp*

Bass Bb *mp* *E♭ Bass cue*

Timp.

D. Set *mp*

Perc.

84 **K**

Sop. Cnt. *mf*

S. Cnt. *mf* Am *mf* Am<sup>7</sup>D *mf* D<sup>7</sup> *mf* G<sup>7</sup> *mf* *as written* *mf* *à 2*

Rep. Cnt.

2nd Cnt.

3rd Cnt.

Flug. *mf*

Solo Hn. *mf*

1st Hn. *mf*

2nd Hn. *mf*

1st Bar. *mf*

2nd Bar.

1st Tbn. *mf*

2nd Tbn. *mf*

B. Tbn. *mf*

Euph. *mf* *2 Players*

Bass Eb *mf*

Bass Bb *mf* *Play*

Timp.

D. Set *mf*

Perc. *mf*

91

Sop. Cnt.

S. Cnt.

Rep. Cnt.

2nd Cnt.

3rd Cnt.

Flug.

Solo Hn.

1st Hn.

2nd Hn.

1st Bar.

2nd Bar.

1st Tbn.

2nd Tbn.

B. Tbn.

Euph.

Bass Eb

Bass Bb

Timp.

D. Set

Perc.

*Soli (with 2nd Cnt.)*  
*f*

*Soli (with R. Cnt.)*  
*f*

*Solo*  
*mf*

*à 2*  
*div.*

*mf*

48

Sop. Cnt.

S. Cnt.

Rep. Cnt.

2nd Cnt.

3rd Cnt.

Flug.

Solo Hn.

1st Hn.

2nd Hn.

1st Bar.

2nd Bar.

1st Tbn.

2nd Tbn.

B. Tbn.

Euph.

Bass Eb

Bass Bb

Timp.

D. Set

Perc.

**L**

*Soli (with Flugel)*

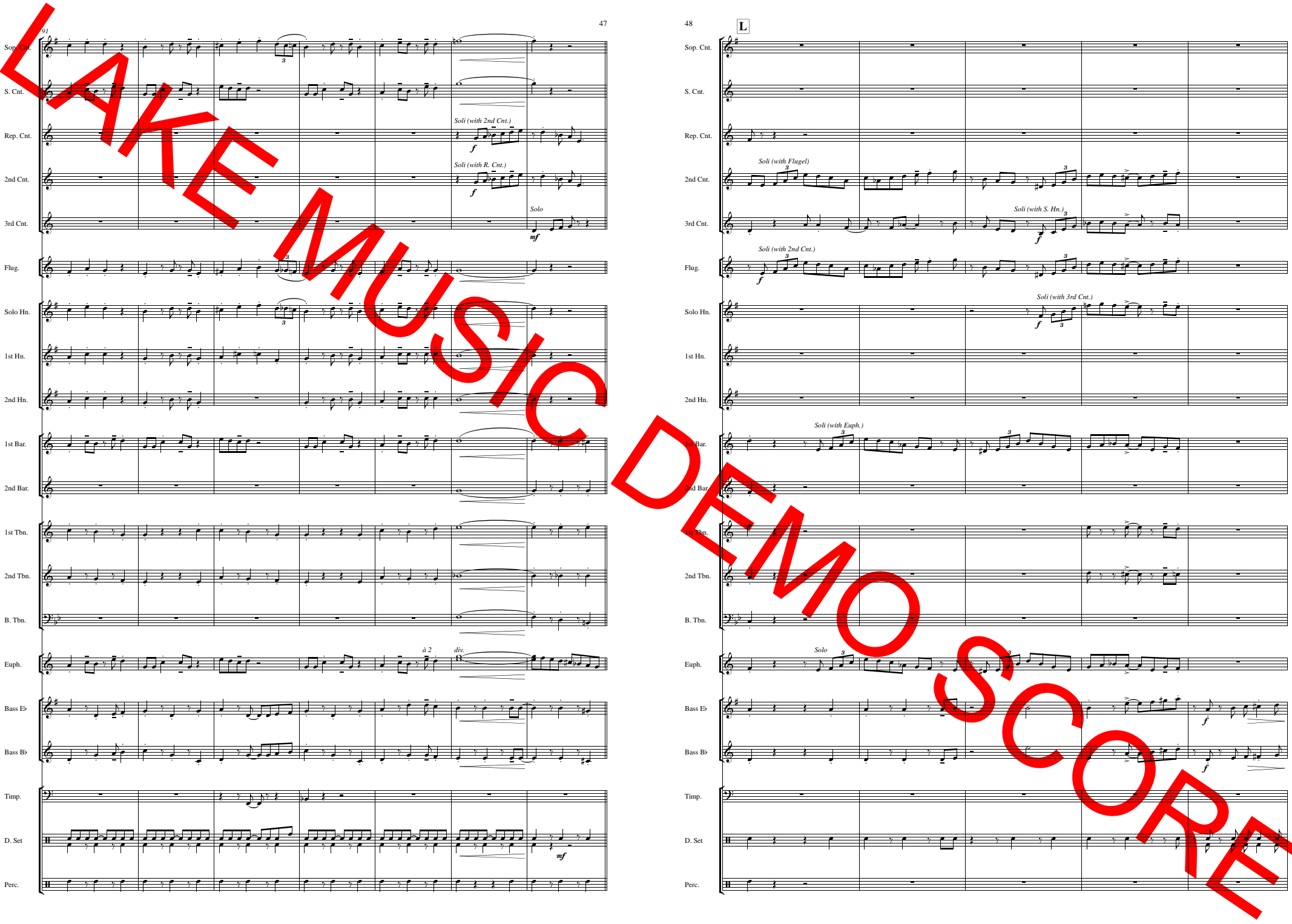
*Soli (with S. Hn.)*  
*f*

*Soli (with 2nd Cnt.)*  
*f*

*Soli (with 3rd Cnt.)*  
*f*

*Soli (with Euph.)*  
*f*

*Solo*  
*f*





103

Sop. Cnt. *opt.*

S. Cnt. *à 2* *f* *div.* *unb.* *Tutti*

Rep. Cnt. *f*

2nd Cnt. *à 2* *mf* *f*

3rd Cnt. *à 2* *f* *div.* *mf* *Both*

Flug. *f* *opt.*

Solo Hn. *mf* *f* *opt.*

1st Hn. *mf*

2nd Hn. *mf* *f*

1st Bar. *mf* *p* *mf* *f*

2nd Bar. *mf* *p* *mf* *f*

1st Tbn. *mf* *p* *mf* *f*

2nd Tbn. *mf* *p* *mf* *f*

B. Tbn. *mf* *p* *mf* *f*

Euph. *mf* *f*

Bass Eb *mf* *f*

Bass Bb *mf* *f*

Timp. *f*

D. Set *f*

Perc. *f*

WAKE MUSIC  
 DEMO SCORE